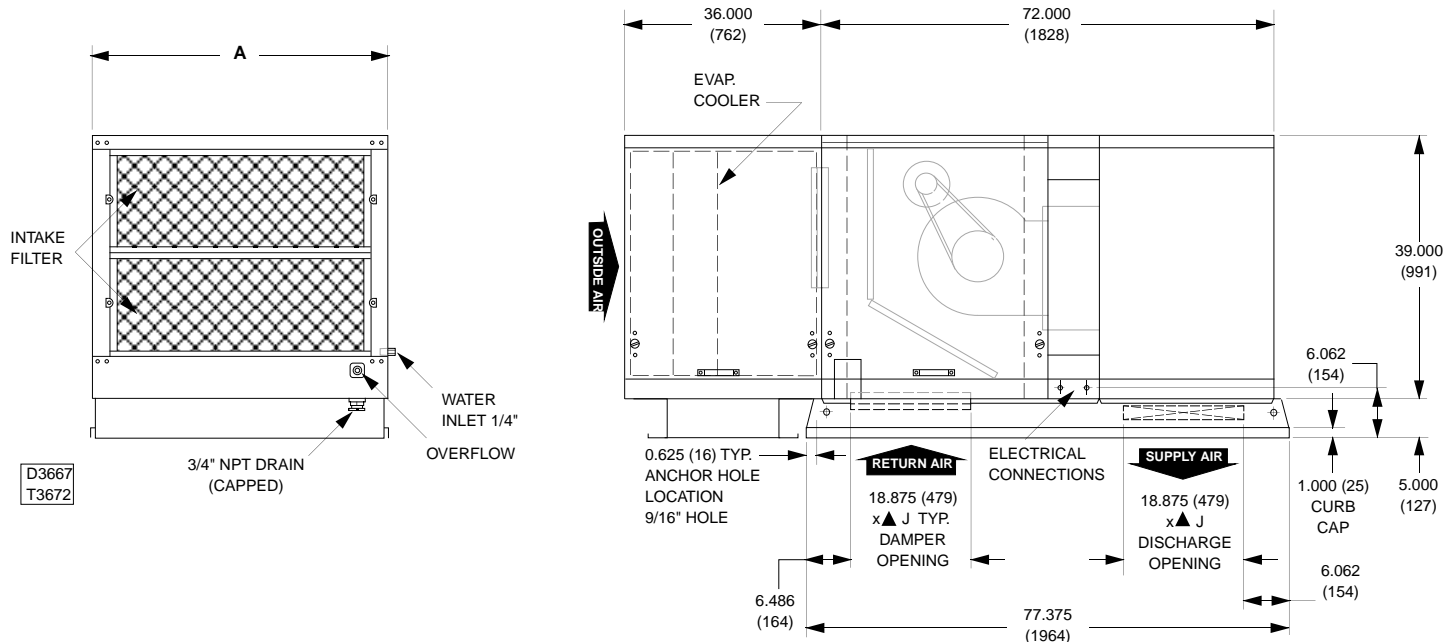


ENGINEERED PRODUCTS



Model - AH(20, 40) (0) (0) R

Unit Type (UT) - AH, Standard Air Handler with Evaporative Cooler and Supply Plenum
 Capacity (CA) - 20 or 40 (200 or 400 mBTU)
 Furnace Type/Access Side (FT) - A, Right Hand or B, Left Hand
 Furnace Construction Material (FM) - 0, None
 Rooftop Arrangement (RA) - R, Standard Air Handler



CAPACITY	A	B	C	G	▲J
<input type="checkbox"/> 20	43.875 (1114)	23.812 (605)	21.938 (557)	42.062 (1068)	35.000 (889)
<input type="checkbox"/> 40	60.375 (1534)	45.812 (1164)	30.188 (767)	58.562 (1487)	51.500 (1308)

NOTE:
 DIMENSIONS ARE IN INCHES, DIMENSIONS IN PARENTHESIS ARE IN MILLIMETERS.
 ▲ "J" DIMENSION IS AN OUTSIDE DIMENSION FOR RETURN AIR DAMPERS.
 ▲ "J" DIMENSION IS AN INSIDE OPENING FOR SUPPLY AIR (WITHOUT DAMPERS).

Project: _____

Unit Tag: _____



260 NORTH ELM ST. WESTFIELD, MA 01085
 (413) 564-5540 • FAX: (413) 562-5311

www.sterlinghvac.com A MESTEK COMPANY

The above dimensional drawing includes options that might not pertain to the unit being submitted for approval. Please note that the following items checked below are **not included** with the unit being submitted:

Outside Air Opening / Dampers Outside Air Hood

Return Air Openings / Dampers

ENGINEERED PRODUCTS

AH(20, 40) (0) (0) R Performance Table

Capacity		TOTAL EXTERNAL STATIC PRESSURE (INCHES OF WATER)															
		0.2		0.4		0.6		0.8		1		1.2		1.4		1.6	
		RPM	BHP	RPM	BHP	RPM	BHP	RPM	BHP	RPM	BHP	RPM	BHP	RPM	BHP	RPM	BHP
20	1,500	395	0.12	530	0.19	645	0.27	750	0.35	845	0.44	930	0.54	1010	0.65	1085	0.76
	2,000	435	0.22	550	0.30	655	0.40	750	0.49	835	0.59	915	0.70	995	0.81	1065	0.93
	3,000	555	0.61	630	0.71	710	0.83	790	0.96	865	1.09	935	1.23	1000	1.37	1065	1.51
	4,000	700	1.33	750	1.47	805	1.61	865	1.75	930	1.90	990	2.07	1045	2.25	1105	2.43
	5,000	855	2.51	890	2.68	930	2.85	975	3.02	1020	3.19	1070	3.37	1120	3.55	1170	3.75
	5,500	935	3.30	965	3.49	1000	3.67	1040	3.86	1080	4.05	1120	4.24	1165	4.43	1210	4.63
	6,000	1015	4.25	1040	4.45	1075	4.65	1105	4.85								
40	4,000	450	0.46	565	0.64	670	0.82	760	1.01	845	1.22	930	1.43	1005	1.66	1075	1.90
	5,000	510	0.79	605	0.99	700	1.21	785	1.44	860	1.67	935	1.91	1005	2.16	1070	2.42
	6,000	575	1.28	655	1.49	740	1.73	815	2.00	885	2.28	955	2.56	1020	2.84	1085	3.12
	7,000	650	1.95	715	2.19	785	2.44	855	2.73	920	3.04	985	3.36	1045	3.68	1105	4.00
	8,000	725	2.83	780	3.10	840	3.38	905	3.67	965	3.99	1025	4.34	1080	4.71		

Capacity		TOTAL EXTERNAL STATIC PRESSURE (INCHES OF WATER)													
		1.8		2		2.2		2.4		2.6		2.8		3	
		RPM	BHP	RPM	BHP	RPM	BHP	RPM	BHP	RPM	BHP	RPM	BHP	RPM	BHP
20	2,000	1135	1.06												
	3,000	1125	1.66	1180	1.81	1240	1.96	1295	2.12	1350	2.28	1405	2.45	1455	2.62
	4,000	1160	2.61	1210	2.80	1260	2.98	1310	3.17	1360	3.35	1405	3.54	1455	3.74
	5,000	1220	3.96	1265	4.18	1310	4.40	1360	4.63	1400	4.86				
	5,500	1255	4.84												
40	4,000	1140	2.15	1205	2.42										
	5,000	1135	2.69	1200	2.97										
	6,000	1140	3.41	1200	3.71	1255	4.02	1315	4.34	1365	4.67	1420	5.00		
	7,000	1160	4.33	1215	4.66	1270	4.99								

NOTES: The pressure drop for Accessories from the following table, must be allowed for when using the above Performance table.

Unless otherwise specified, the following conversions may be used for calculating SI units.

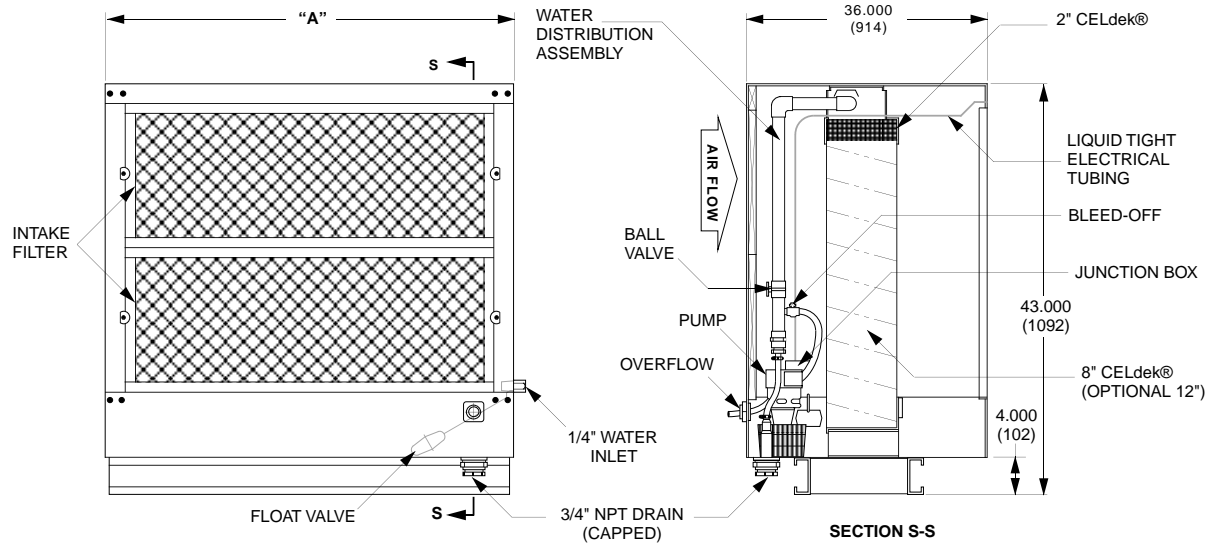
1 Cu. Ft. = 0.028m³, 1 ft. = 0.305m, 1 in. = 25.4mm, 1 psig = 6.894 kPa, 1000 Btu per hr. = 0.293 kW, 1 in. water column = 0.249 kPa, 1 gallon = 3.785 L, 1000 Btu/Cu. Ft. = 37.5 MJ/m³, 1 lb. = 0.453 kg.

AH(20, 40) (0) (0) R Accessories Pressure Drop Table

CAPACITY		PRESSURE LOSS (INCHES OF WATER)												
		RAINHOOD WITH		FILTERS						SUPPLY AIR		EVAP. PAD		RETURN AIR DAMPER
		SCREEN	MSTR. ELIM	THROWAWAY		WASHABLE		PLEATED		PLENUM	8"	12"		
				2"	1"	2"	1"	2"						
20	1,600	.02	.02	.05	<.01	.01	.06	.03	.02	.02	.03	.03		
	1,800	.02	.03	.06	<.01	.01	.07	.04	.03	.02	.03	.03		
	2,000	.02	.03	.07	.01	.02	.08	.04	.03	.03	.04	.04		
	2,200	.03	.04	.08	.01	.02	.09	.05	.04	.03	.05	.05		
	2,400	.03	.05	.09	.02	.02	.11	.06	.05	.04	.06	.05		
	2,500	.04	.05	.09	.02	.03	.12	.07	.05	.04	.07	.06		
	3,000	.05	.07	.12	.03	.04	.16	.09	.07	.06	.10	.08		
	4,000	.09	.13	.17	.05	.07	.26	.16	.13	.11	.17	.15		
	5,000	.15	.20	—	.07	.11	.38	.23	.21	.18	.27	.23		
5,500	.18	.25	—	.09	.13	.44	.28	.25	.22	.32	.28			
40	4,000	.04	.06	.10	.02	.03	.13	.07	.04	.06	.09	.07		
	4,400	.05	.07	.11	.03	.04	.15	.09	.05	.07	.11	.08		
	4,800	.06	.09	.13	.03	.04	.18	.10	.05	.09	.13	.10		
	5,000	.07	.10	.13	.03	.05	.19	.11	.06	.09	.14	.10		
	6,000	.10	.14	.17	.05	.07	.26	.16	.08	.14	.20	.15		
	7,000	.13	.19	—	.07	.09	.33	.21	.11	.18	.27	.20		
	8,000	.17	.24	—	.09	.12	.42	.26	.15	.24	.36	.26		

AH(20, 40) (0) (0) R Evaporative Cooler Specifications

MODEL	A
20	43.875 (1114)
40	60.375 (1534)

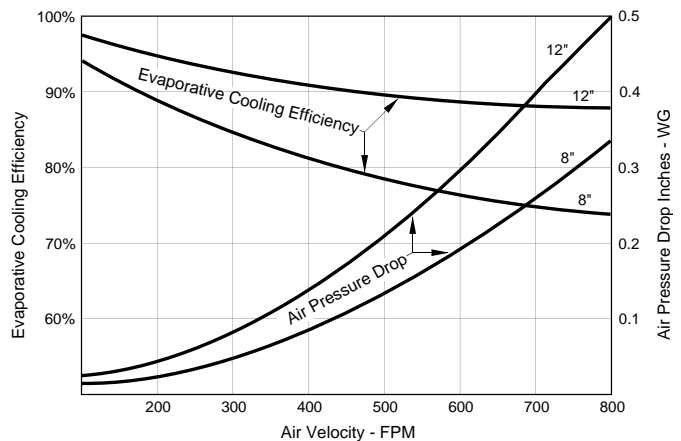


Performance and Dimensional Data

Capacity	20, 40	CFM		8" Saturation Efficiency Range		12" Saturation Efficiency Range		8" or 12" Media Face Area		Pressure Drop in W.C. (kPa)		"A" Unit Width	Shipping Wt.	Operating Wt.
		MIN.	MAX.	MIN.	MAX.	MIN.	MAX.	Ft.2 (m2)	Size in. (mm)	MIN.	MAX.	in. (mm)	lb. (kg)	lb. (kg)
□	20	1,600 (0.755)	5,500 (2.596)	77	88	88	92	9.38 (0.87)	31 x 43-9/16 (787 x 1106)	0.03 (0.01)	0.20 (0.05)	43-3/4 (1111)	166 (75)	386 (175)
□	40	3,200 (1.510)	8,500 (4.012)	77	86	87	92	1292 (1.20)	31 x 60 (787 x 1524)	0.07 (0.02)	0.28 (0.07)	60-1/4 (1530)	206 (93)	509 (231)

CELdek® EVAPORATIVE MEDIA

The Sterling Evaporative Cooler utilizes high efficiency CELdek® media. CELdek® is made from a special cellulose paper, impregnated with insoluble anti-rot salts and rigidifying saturants. The cross fluted design of the pads induces highly-turbulent mixing of air and water for optimum heat and moisture transfer. Sterling Evaporative Coolers utilize 8 inch CELdek® as standard equipment. Optional 12 inch CELdek®, 8 and 12 inch GLASdek® are also available. A 2 inch distribution pad is used to disperse the water evenly over the media.



EVAPORATIVE COOLER EFFICIENCY/A.P.D. CHART

AH(20, 40) (0) (0) R Weights, Filter Data & Roof Openings

Unit Weights

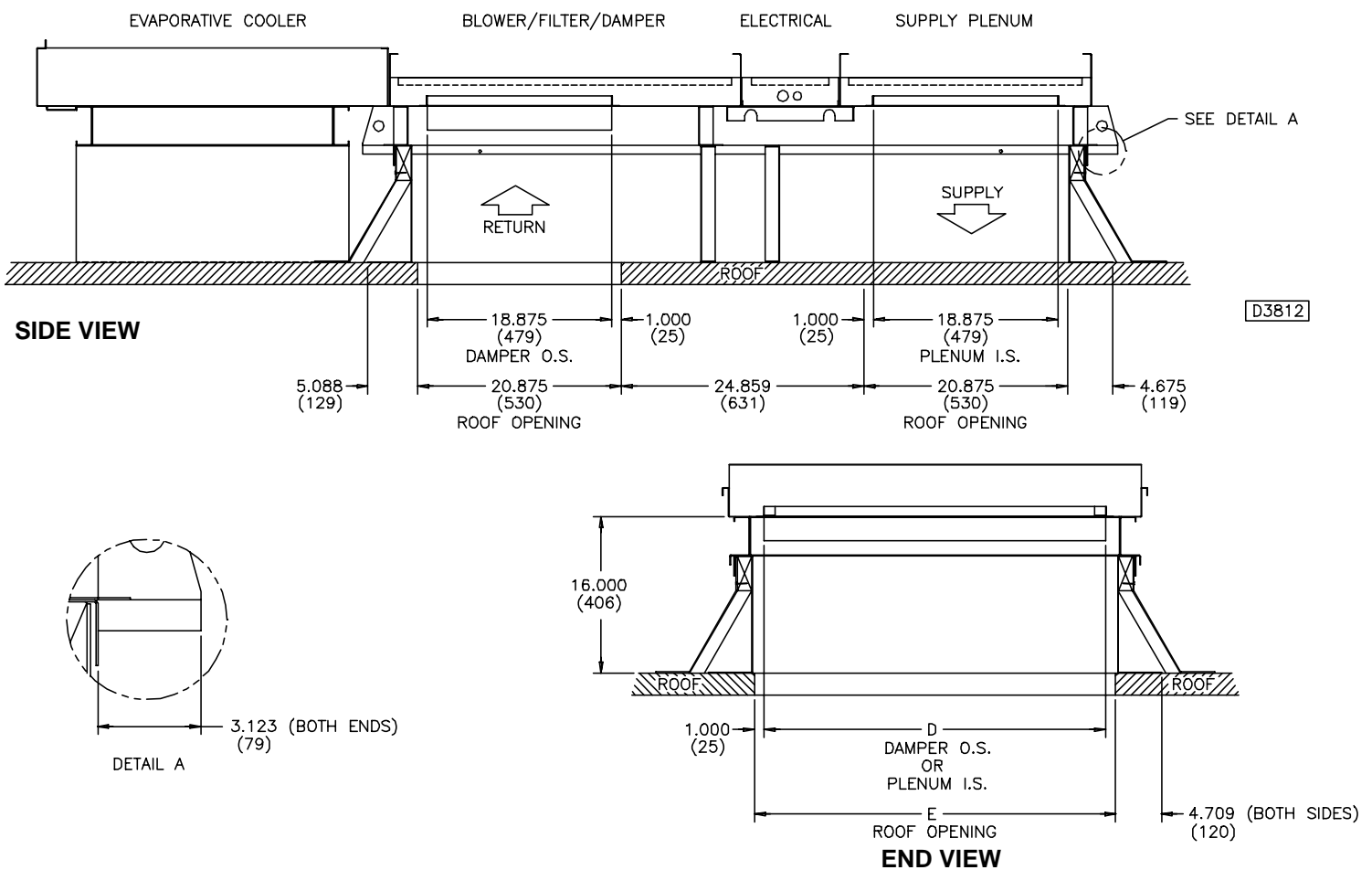
Approximate weights for Arrangement "R"		
Unit Type	Net Wt.	Ship Wt.
Capacity	(Lb.)	(Lb.)
AH20	715	852
AH40	905	920

Filter Data

Capacity	(Quantity) Filter Size
20	(4) 20 x 20
40	(6) 20 x 20

See motor spec #MDS-1 for motor weight/adder & amperage.

Roof Openings



ROOF CURB KIT #RC002

CAPACITY (CA)	D	E
20	35.000 (889)	37.000 (940)
40	51.500 (1,308)	53.500 (1,359)

MODEL NUMBER

	1	2	3	4	5	6	7	8	9	10	11	12	13	14	15	16	+
(EXX)	A	H	*	*	0	0	R										

*DIGITS 3 & 4 = (CA) CAPACITY
REFER TO CATALOG FOR MODEL NUMBER DESCRIPTION.